

SETTING OF ALL MONUMENTS SHALL BE PERFORMED BY A SURVEYOR REGISTERED IN THE STATE OF OHIO. THE MONUMENT ASSEMBLIES AND REFERENCE MONUMENTS WILL BE INSTALLED BY THE CONTRACTOR AT THE TIME OF CONSTRUCTION. THE IRON PIN AND CAP (WHEN REQUIRED) ARE TO BE INSTALLED BY THE CONTRACTOR'S SURVEYOR.

CHANGES OR ALTERATIONS TO THE LOCATION OF ANY MONUMENTS SHOWN IN THIS TABLE, REQUIRE PRIOR APPROVAL FROM THE DISTRICT REAL ESTATE ADMINISTRATOR OF THE OHIO DEPARTMENT OF TRANSPORTATION. IN THE EVENT THAT CHANGES OR ALTERATIONS ARE APPROVED, A REVISED CENTERLINE PLAT WITH THE NEW LOCATIONS SHALL BE RECORDED IN THE APPLICABLE COUNTY RECORDS AND THE OHIO DEPARTMENT OF TRANSPORTATION. SPECIFICATIONS FOR MONUMENT ASSEMBLIES, REFERENCE MONUMENTS AND RIGHT OF WAY MONUMENTS ARE SHOWN ON STANDARD CONSTRUCTION DRAWING RM-1.1.

CENTERLINE PLAT

AUGLAIZE COUNTY

BASIS OF $\frac{1}{2}$ R/W AND R/W LIMITS

SEVERAL ODOT PLAN SETS WERE USED TO ESTABLISH THIS VIEW OF THE CURRENT CENTERLINE SURVEY.

THE DIFFERENT ODOT PLAN SETS ANALYZED FOR THIS SURVEY ARE THE FOLLOWING:

SHE-25-17.80/AUG-25-0.00
AUG-25-5.05
AUG-33-11.50/16.49/AUG-25-4.92 (1957)
AUG-33-16.89 (2017)
AUG-33-16.72 (2018)

DUCHOUQUET TOWNSHIP
SEC. 34, T. 5-S, R. 6-E

DUCHOUQUET TOWNSHIP
SEC. 33, T. 5-S, R. 6-E

PUSHETA TOWNSHIP
SEC. 4, T. 6-S, R. 6-E

PUSHETA TOWNSHIP
SEC. 3, T. 6-S, R. 6-E

SURVEYING PARAMETERS

THE FOLLOWING VERTICAL POSITIONING, AND HORIZONTAL POSITIONING PARAMETERS WERE USED FOR ALL SURVEYING ON THIS PROJECT:

POSITIONING METHOD: ODOT REAL TIME NETWORK (2011)
MONUMENT TYPE: TYPE B

VERTICAL POSITIONING -
ORTHOMETRIC HEIGHT DATUM: NAVD 88
GEOID: 18

HORIZONTAL POSITIONING -
REFERENCE FRAME: NAD83/2011
ELLIPSOID: GRS 1980
COORDINATE SYSTEM: CUSTOM-GROUND
NAD83/2011 OHIO STATE PLANES, NORTH ZONE, US FOOT
PROJECTION: LAMBERT CONFORMAL
PROJECT (PSF) PROJECT SCALE FACTOR: 1.000060464

UNITS ARE IN U.S. SURVEY FEET. USE THE FOLLOWING
CONVERSION FACTOR: 1 METER = 3.280833333 U.S. SURVEY FEET

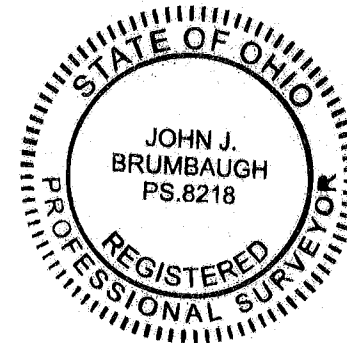
USE THE POSITIONING METHODS AND MONUMENT TYPE USED IN THE ORIGINAL SURVEY TO RESTORE ALL MONUMENTS RELATED TO PRIMARY PROJECT CONTROL THAT ARE DAMAGED OR DESTROYED BY CONSTRUCTION ACTIVITIES. RESTORE THE DAMAGED OR DESTROYED MONUMENTS IN ACCORDANCE WITH CMS 623.

AUGLAIZE COUNTY, OHIO
06/16/2025 09:57 AM
centerline Recording Fees: \$20.00
Emily K. Schlenker
Recorder

BASIS FOR BEARINGS:

ALL BEARINGS SHOWN ARE FOR PROJECT USE ONLY.

FOR US-33 MONUMENT TABLE SEE SHEET 2/11
FOR HORIZONTAL TRAVERSE MONUMENT TABLE SEE SHEET 2/11
FOR I-75 SEE SHEET 3-4/11
FOR CEMETERY ROAD SEE SHEET 5/11
FOR RAMPS SEE SHEET 7-11/11



I, JOHN J. BRUMBAUGH, P.S. have conducted a survey to re-establish the centerline of right of way for the Ohio Department of Transportation in 2024. The results of that survey are contained herein. The horizontal coordinates expressed herein are based on the Ohio State Plane Coordinate System, NORTH Zone on NAD 83 2011 datum. The Project Coordinates (U.S. Survey Feet) are relative to State Plane Grid Coordinates (U.S. Survey Feet) by a Project Adjustment Factor multiplier of 1.000060464. As a part of this project I have reestablished the locations of the centerline of existing Right of Way necessary for property takes contained herein. All of my work contained herein was conducted in accordance with Ohio Administrative Code 4733-37 commonly known as "A Minimum Standards for Boundary Surveys in the State of Ohio" unless noted. The words I and my as used herein are to mean either myself or someone working under my direct supervision.

JOHN J. BRUMBAUGH, Professional Land Surveyor No. 8218, 6/10/2025

Date: 6/10/2025

RECEIVED June 16, 2025

RECORDED June 16, 2025

BOOK 2 PAGE 63-73

Emily Schlenker

COUNTY RECORDER

AUGLAIZE COUNTY ENGINEER

CHECKED BY

FILE NUMBER

6/13/2025

DATE

HORIZONTAL
SCALE IN FEET
0 100' 200' 400'

CENTERLINE PLAT
AUG-33/75

DESIGN AGENCY

JOHN J. BRUMBAUGH
CONSULTING ENGINEER &
SURVEYOR, LLC
2270 SOUTH MAIN STREET
WEST MILITARY, OH 43081
P: 937.698.3000 F: 937.698.3928
WWW.BES-ENGINEER.COM

DESIGNER

SES

REVIEWER

JJB 3-26-24

PROJECT ID

118055

SUBSET TOTAL

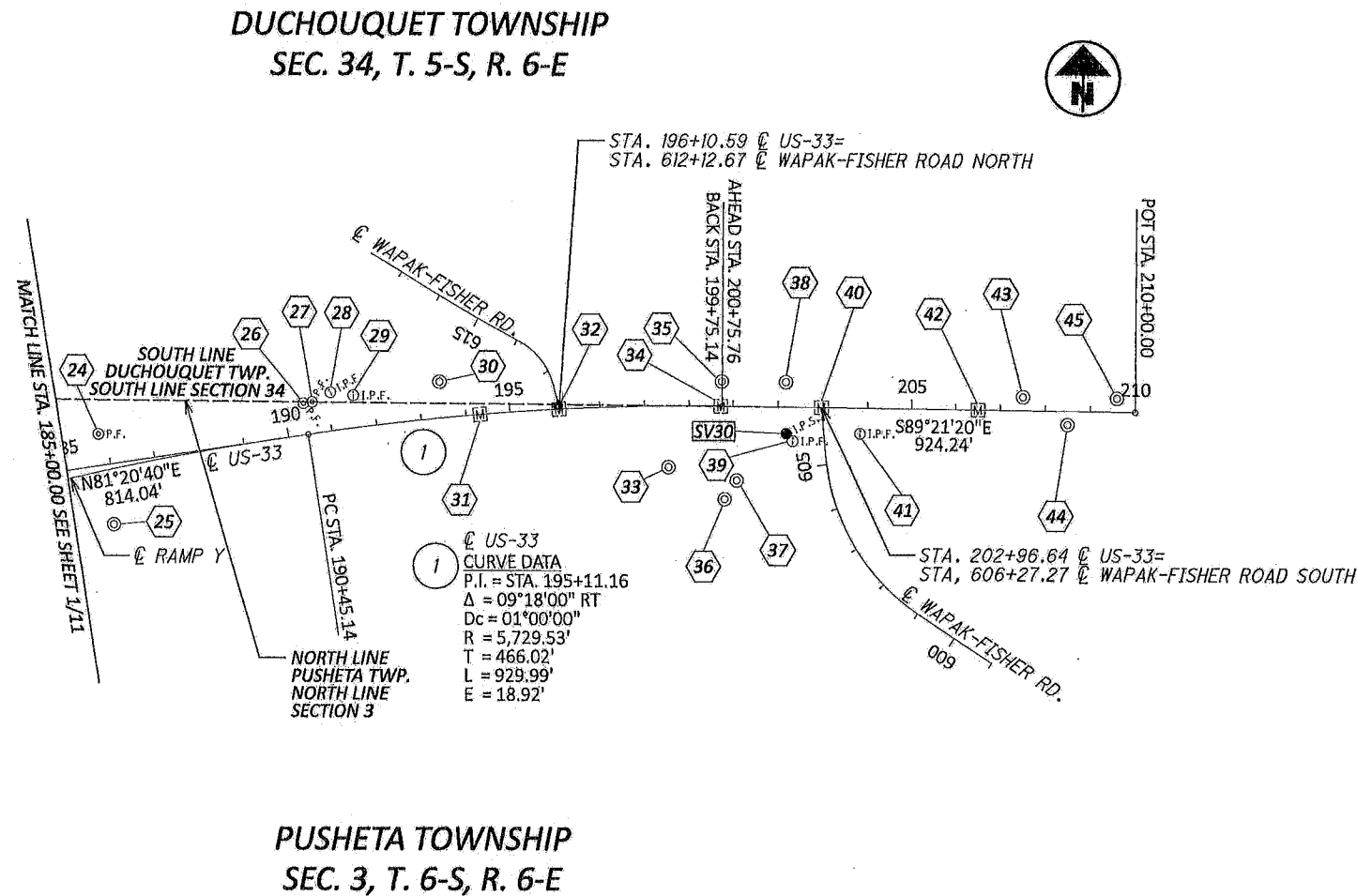
1 11

SHEET TOTAL












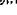

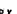

P.O 0

CENTERLINE PLAT
AUGLAIZE COUNTY

NUMBER	CL US-33		NORTHING (US FT)	EASTING (US FT)	DESCRIPTION
	STATION	OFFSET			
	US-33 WEST				
1	130+00.34	176.27 RT	328277.258	1501027.446	MONBOX (TREATY)
2	137+08.98	65.00 LT	328516.150	1501736.549	CMON
3	137+09.31	139.93 RT	328311.225	1501736.476	CMON
4	140+48.14	158.78 RT	328291.721	1502075.272	MAG
5	141+84.25	79.93 LT	328530.166	1502211.837	CMON
6	146+51.53	141.22 RT	328289.584	1502666.648	5/8" IP JAUERT
7	153+99.63	139.93 RT	328182.813	1503388.018	CMON BROKEN
8	154+63.11	384.35 RT	327950.567	1503398.376	5/8" IP
9	156+72.52	176.92 RT	328084.378	1503637.144	CMON
10	158+65.67	169.07 LT	328368.603	1503913.244	CMON
11	160+99.61	199.95 LT	328344.478	1504140.450	CMON
12	162+99.97	266.89 LT	328370.202	1504342.019	CMON
13	172+05.09	69.06 LT	328081.381	1505193.797	CMON
14	179+18.66	223.71 RT	327814.112	1505926.111	CMON
15	179+98.40	69.00 LT	328113.595	1505976.256	CMON
16	180+57.55	115.94 LT	328166.933	1506028.650	3/4" IP ODOT R/W
17	180+65.17	168.83 LT	328220.332	1506029.616	3/4" IP ODOT R/W
18	181+77.34	49.72 LT	328116.738	1506154.351	1" IPIPE
19	181+83.87	124.89 LT	328192.058	1506150.066	3/4" IPIPE ODOT R/W
20	182+30.10	133.30 RT	327943.417	1506233.611	CMON
21	182+58.75	89.86 LT	328168.357	1506228.374	3/4" IPIPE ODOT R/W
22	183+58.72	74.78 LT	328168.494	1506329.477	3/4" IPIPE ODOT R/W
23	184+88.83	133.22 RT	327982.439	1506489.402	3/4" IP ODOT R/W
24	185+83.72	69.87 LT	328197.497	1506552.645	3/4" IPIPE ODOT R/W
25	185+87.44	132.99 RT	327997.508	1506586.853	CMON
26	190+44.54	69.91 LT	328266.889	1507008.208	1" IPIPE
27	190+64.74	70.09 LT	328270.111	1507028.402	1" IPIPE
28	191+08.79	84.85 LT	328291.116	1507070.471	3/4" IP ODOT R/W
29	191+58.80	71.68 LT	328284.913	1507122.474	3/4" IP ODOT R/W
30	193+48.98	80.03 LT	328315.258	1507312.949	CMON
31	194+32.51	0.20 RT	328242.974	1507403.984	1" IP IN MONBOX
32	196+10.67	0.24 RT	328256.026	1507581.718	MONBOX
33	198+52.02	135.66 RT	328127.170	1507824.314	CMON
34	199+72.29	0.27 RT	328262.516	1507943.191	1" IP IN MONBOX
35	199+74.09	54.58 LT	328317.350	1507945.598	CMON
	US-33 EAST				
36	200+82.94	206.42 RT	328056.268	1507950.892	CMON
37	201+10.01	164.22 RT	328098.166	1507978.431	CMON
38	202+17.49	55.30 LT	328316.460	1508088.373	CMON
39	202+33.19	75.30 RT	328185.696	1508102.609	3/4" IP ODOT R/W
40	202+96.58	0.01 LT	328260.289	1508166.842	1" IP IN MONBOX
41	203+83.26	56.80 RT	328202.501	1508252.878	5/8" IP ODOT R/W
42	206+49.92	0.03 LT	328256.332	1508520.163	1" IP IN MONBOX
43	207+49.43	29.98 LT	328285.163	1508619.995	CMON
44	208+49.46	30.01 RT	328224.050	1508719.352	CMON
45	209+59.15	29.97 LT	328282.789	1508829.711	CMON DISC



MONUMENT LEGEND

-  EXISTING R/W MONUMENT BOX
-  PROPOSED R/W MONUMENT BOX
-  EXISTING CONCRETE MONUMENT
-  PROPOSED CONCRETE MONUMENT
-  RAILROAD SPIKE FOUND
-  RAILROAD SPIKE SET
-  IRON PIN FOUND
-  IRON PIN FOUND W/ ID CAP
-  IRON PIN SET W/ ID CAP
-  IRON PIPE FOUND
-  IRON PIPE SET
-  P.K. NAIL FOUND
-  P.K. NAIL SET
-  MAG NAIL FOUND
-  MAG NAIL SET

DESIGN AGENCY

BES ENGINEERING & SURVEYING, LLC
270 SOUTH MIAMI STREET
WEST MILTON, OH 45383
P: 937.698.3000 F: 937.698.3928
WWW.BES-ENGINEER.COM

DESIGNER
SES

REVIEWER
JJB 3-26-24

PROJECT ID
118055

2	11
---	----

P.0	0
-----	---

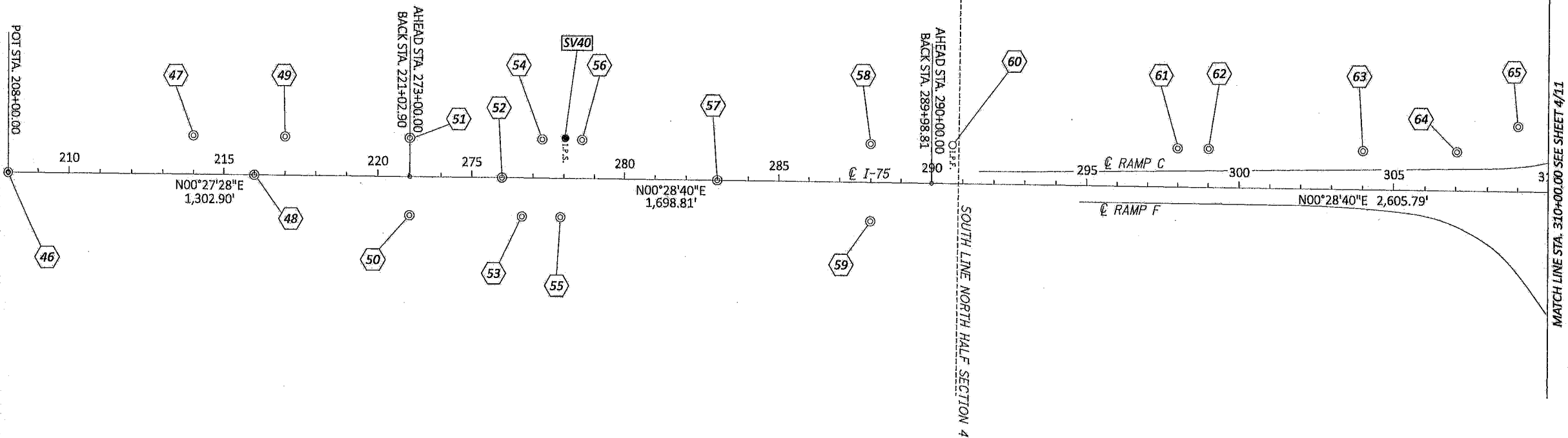
AUG-33/75 CENTERLINE AND R/W

MODEL-Sheet_SurfR_PAPER/3/24 DATE: 3/25/2024 TIME: 11:57:33 AM USER: steven.schwartz
T:\BES\2023\7\14\22_ODOT\00DOTCE002\118055\00-Engineering\BWSheets\118055_RC003.dgn

CENTERLINE PLAT

AUGLAIZE COUNTY

PUSHETA TOWNSHIP
SEC. 4, T. 6-S, R. 6-E



MONUMENT LEGEND

- EXISTING R/W MONUMENT BOX
- PROPOSED R/W MONUMENT BOX
- EXISTING CONCRETE MONUMENT
- PROPOSED CONCRETE MONUMENT
- RAILROAD SPIKE FOUND
- RAILROAD SPIKE SET
- IRON PIN FOUND
- IRON PIN FOUND W/ ID CAP
- IRON PIN SET W/ ID CAP
- IRON PIPE FOUND
- IRON PIPE SET
- P.K. NAIL FOUND
- P.K. NAIL SET
- MAG NAIL FOUND
- MAG NAIL SET

DESIGN AGENCY

DESIGNER
SES
REVIEWER
JJB 3-26-24
PROJECT ID
118055
SUBSET TOTAL
3 11
SHEET TOTAL
P.O. 0

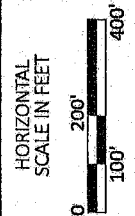
RECEIVED June 16, 20 25
RECORDED June 16, 20 25
BOOK 2 PAGE 63-73
Emily Schlenker
COUNTY RECORDER

AUGLAIZE COUNTY ENGINEER
CHECKED BY

FILE NUMBER
6/12/2025
DATE

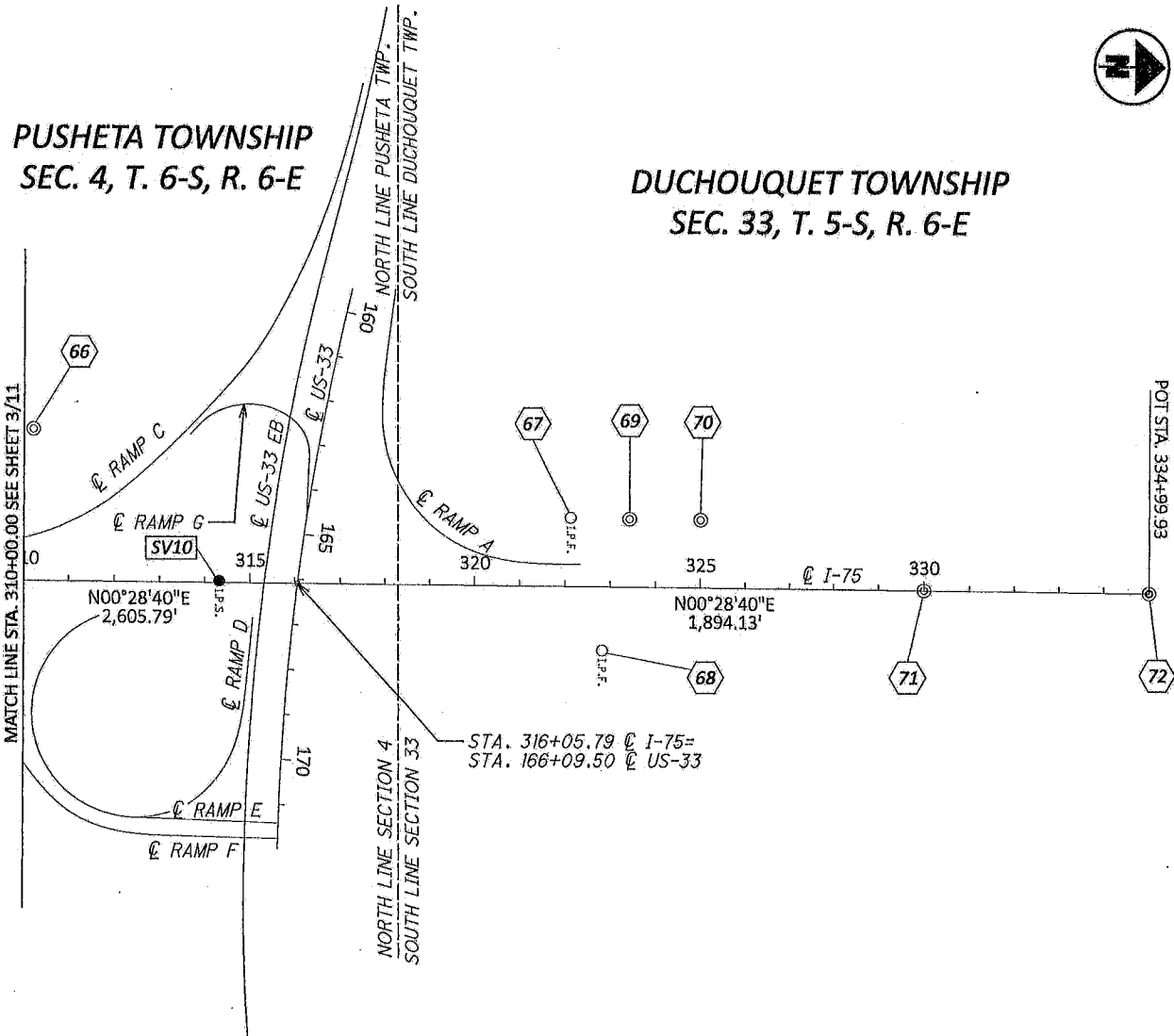
FOR HORIZONTAL TRAVERSE MONUMENT TABLE SEE SHEET 2/11
FOR I-75 MONUMENT TABLE SEE SHEET 4/11
FOR RAMPS SEE SHEET 7-11/11

CENTERLINE PLAT
AUG-33/75



CENTERLINE PLAT

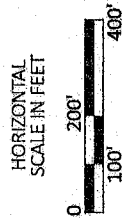
AUGLAIZE COUNTY



EXISTING CENTERLINE AND MONUMENT COORDINATE TABLE					
NUMBER	CL I-75		NORTHING (US FT)	EASTING (US FT)	DESCRIPTION
	STATION	OFFSET			
	I-75 SOUTH				
46	208+00.00	0.00 CL	322462.592	1504552.130	5/8" IP
47	214+00.43	124.94 LT	323054.003	1504431.994	CMON
48	216+00.29	0.16 RT	323252.857	1504558.676	5/8" IP
49	217+00.44	124.83 LT	323353.996	1504434.497	CMON
50	221+02.53	124.77 RT	323754.082	1504687.303	CMON
	I-75 MIDDLE				
51	273+00.33	125.00 LT	323756.828	1504437.549	CMON
52	276+00.21	0.18 RT	324055.654	1504565.222	5/8" IP
53	276+65.06	124.99 RT	324119.457	1504690.572	CMON
54	277+30.48	124.81 LT	324186.959	1504441.328	CMON
55	277+89.91	125.51 RT	324244.295	1504692.136	CMON
56	278+60.33	124.50 LT	324316.800	1504442.719	CMON
57	283+00.39	0.06 LT	324755.811	1504570.829	5/8" IP
58	287+99.87	124.33 LT	325256.312	1504450.725	CMON
59	287+99.99	125.56 RT	325254.345	1504700.605	CMON
	I-75 NORTH				
60	290+66.19	124.45 LT	325521.437	1504452.816	5/8" IP B J CORE
61	297+99.41	125.04 LT	326254.633	1504458.343	CMON
62	299+00.93	124.89 LT	326356.146	1504459.335	CMON
63	304+00.78	124.82 LT	326855.981	1504463.574	CMON
64	307+03.93	125.58 LT	327159.125	1504465.350	CMON
65	309+00.67	209.90 LT	327356.565	1504382.674	CMON
66	310+20.72	334.93 LT	327477.649	1504258.645	CMON
67	322+12.13	151.63 LT	328667.488	1504451.878	IPIN BENT
68	322+82.55	140.69 RT	328735.474	1504744.768	5/8" IP
69	323+42.47	149.98 LT	328797.810	1504454.610	CMON
70	325+00.27	149.78 LT	328955.603	1504456.130	CMON
71	330+00.00	0.01 LT	329454.069	1504610.059	CMON
72	334+99.93	0.00 CL	329953.977	1504614.239	CMON

MONUMENT LEGEND

- EXISTING R/W MONUMENT BOX
- PROPOSED R/W MONUMENT BOX
- EXISTING CONCRETE MONUMENT
- PROPOSED CONCRETE MONUMENT
- RAILROAD SPIKE FOUND
- RAILROAD SPIKE SET
- IRON PIN FOUND
- IRON PIN FOUND W/ ID CAP
- IRON PIN SET W/ ID CAP
- IRON PIPE FOUND
- IRON PIPE SET
- P.K. NAIL FOUND
- P.K. NAIL SET
- MAG NAIL FOUND
- MAG NAIL SET



CENTERLINE PLAT
AUG-33/75

DESIGN AGENCY

DESIGNER
SES

REVIEWER
JJB

PROJECT ID
118055

SUBSET
4

SHEET
P.O

RECEIVED June 16, 20 25
RECORDED June 16, 20 25
BOOK 2 PAGE 63-73
Emily Schlenker
COUNTY RECORDER HS

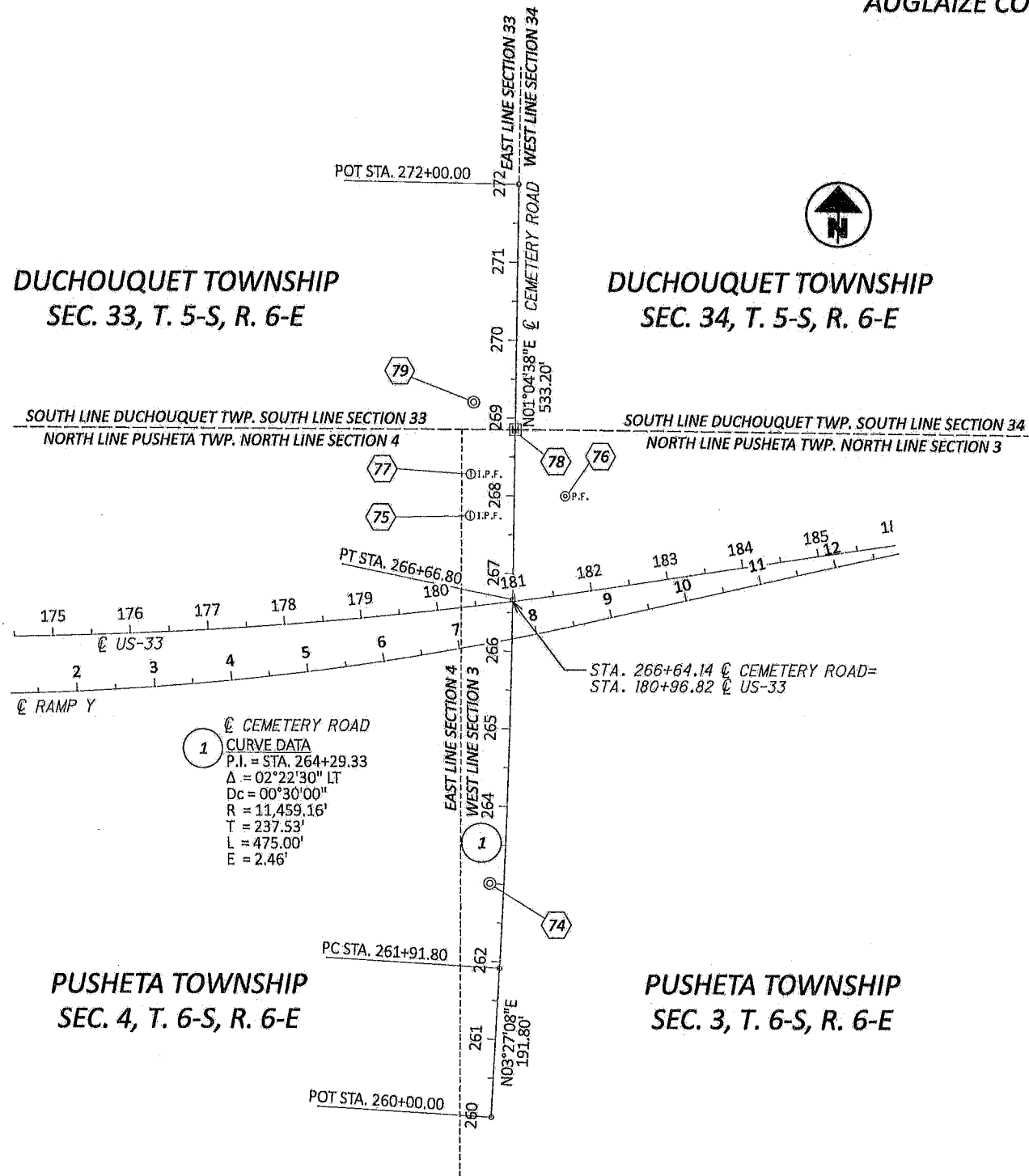
AUGLAIZE COUNTY ENGINEER
CHECKED BY

FILE NUMBER
6/13/2025
DATE

FOR HORIZONTAL TRAVERSE MONUMENT TABLE SEE SHEET 2/11
FOR US-33 SEE SHEET 1-2/11
FOR RAMP SEE SHEET 7-11/11

CENTERLINE PLAT

AUGLAIZE COUNTY



EXISTING CENTERLINE AND MONUMENT COORDINATE TABLE					
NUMBER	CL CEMETERY ROAD		NORTHING (US FT)	EASTING (US FT)	DESCRIPTION
	STATION	OFFSET			
74	263+00.17	17.71 LT	327693.867	1506051.189	CMON
75	267+73.36	54.99 LT	328166.933	1506028.650	3/4" IP ODOT R/W
76	268+00.76	65.93 RT	328192.056	1506150.066	3/4" IPIPE ODOT R/W
77	268+26.77	55.03 LT	328220.332	1506029.616	3/4" IP ODOT R/W
78	268+85.14	0.52 RT	328277.650	1506086.254	MONBOX
79	269+19.21	52.68 LT	328312.721	1506033.709	CMON

MONUMENT LEGEND

- EXISTING R/W MONUMENT BOX
- PROPOSED R/W MONUMENT BOX
- EXISTING CONCRETE MONUMENT
- PROPOSED CONCRETE MONUMENT
- RAILROAD SPIKE FOUND
- RAILROAD SPIKE SET
- IRON PIN FOUND
- IRON PIN FOUND W/ ID CAP
- IRON PIN SET W/ ID CAP
- IRON PIPE FOUND
- IRON PIPE SET
- P.K. NAIL FOUND
- P.K. NAIL SET
- MAG NAIL FOUND
- MAG NAIL SET

DESIGN AGENCY

DESIGN AGENCY
BES ENGINEERING &
SURVEYING, LLC
2710 SOUTH MIAMI STREET
WEST MILTON, OH 45393
P: 937.698.3000 F: 937.698.3026
WWW.BES-ENGINEER.COM

DESIGNER

SES

REVIEWER

JJB 3-26-24

PROJECT ID

118055

SUBSET TOTAL

5 11

SHEET TOTAL

P.O 0

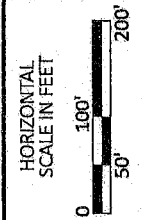
RECEIVED June 16, 20 25
RECORDED June 16, 20 25
BOOK 2 PAGE 63-73
Emily Schlenker
COUNTY RECORDER HS

AUGLAIZE COUNTY ENGINEER
CHECKED BY

FILE NUMBER
6/13/2025
DATE

FOR US-33 SEE SHEET 1-2/11
FOR RAMP Y SEE SHEET 11/11

CENTERLINE PLAT
AUG-33/75



CENTERLINE PLAT

AUGLAIZE COUNTY

DUCHOUQUET TOWNSHIP
SEC. 34, T. 5-S, R. 6-EPUSHETA TOWNSHIP
SEC. 3, T. 6-S, R. 6-E

EXISTING CENTERLINE AND MONUMENT COORDINATE TABLE					
NUMBER	CL WAPAK-FISHER ROAD		NORTHING (US FT)	EASTING (US FT)	DESCRIPTION
	STATION	OFFSET			
	SOUTH				
80	603+00.11	75.00 LT	327906.793	1508179.424	5/8" IP ODOT R/W
81	603+49.98	48.68 LT	327969.043	1508175.397	5/8" IP ODOT R/W
82	605+14.98	59.99 LT	328143.315	1508116.608	5/8" IP ODOT R/W
	NORTH				
83	612+12.42	0.03 RT	328255.026	1507581.718	1" IP IN MONBOX
84	615+75.46	44.09 RT	328531.422	1507357.776	5/8" IP ODOT R/W
85	615+79.74	51.06 LT	328452.305	1507304.749	CMON BROKEN

CENTERLINE PLAT
AUG-33/75

MONUMENT LEGEND

- EXISTING R/W MONUMENT BOX
- PROPOSED R/W MONUMENT BOX
- EXISTING CONCRETE MONUMENT
- PROPOSED CONCRETE MONUMENT
- RAILROAD SPIKE FOUND
- RAILROAD SPIKE SET
- IRON PIN FOUND
- IRON PIN FOUND W/ ID CAP
- IRON PIN SET W/ ID CAP
- IRON PIPE FOUND
- IRON PIPE SET
- P.K. NAIL FOUND
- P.K. NAIL SET
- MAG NAIL FOUND
- MAG NAIL SET

DESIGN AGENCY

H&S ENGINEERING &
SURVEYING, LLC
2270 SOUTH MIAMI STREET
WEST MILTON, OH 45391
P: 937.698.3000 F: 937.698.3028
WWW.HES-ENGINEER.COM

DESIGNER

SES

REVIEWER

JJB 3-26-24

PROJECT ID

118055

SUBSET TOTAL

6 11

SHEET TOTAL

P.O. 0

RECEIVED June 16, 20 25

RECORDED June 16, 20 25

BOOK 2 PAGE 63-73

Emily Schlenker

COUNTY RECORDER H5

AUGLAIZE COUNTY ENGINEER

CHECKED BY

FILE NUMBER

6/13/2025

DATE

FOR US-33 SEE SHEET 1-2/11
FOR HORIZONTAL TRAVERSE MONUMENT TABLE SEE SHEET 2/11

CENTERLINE PLAT

AUGLAIZE COUNTY

DUCHOUQUET TOWNSHIP
SEC. 33, T. 5-S, R. 6-E

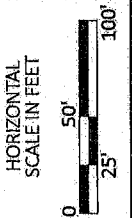
RAMP A

POT STA. 18+83.11

RAMP A

I-75

320

CENTERLINE PLAT
AUG-33/75

DESIGN AGENCY

BES ENGINEERING & SURVEYING, LLC
2226 SOUTH MIAMI STREET
WEST MILTON, OH 45151
P: 937.698.3000 F: 937.698.3928
WWW.BES-ENGINEER.COM

DESIGNER

SES

REVIEWER

JJB 3-26-24

PROJECT ID

118055

SUBSET TOTAL

7 11

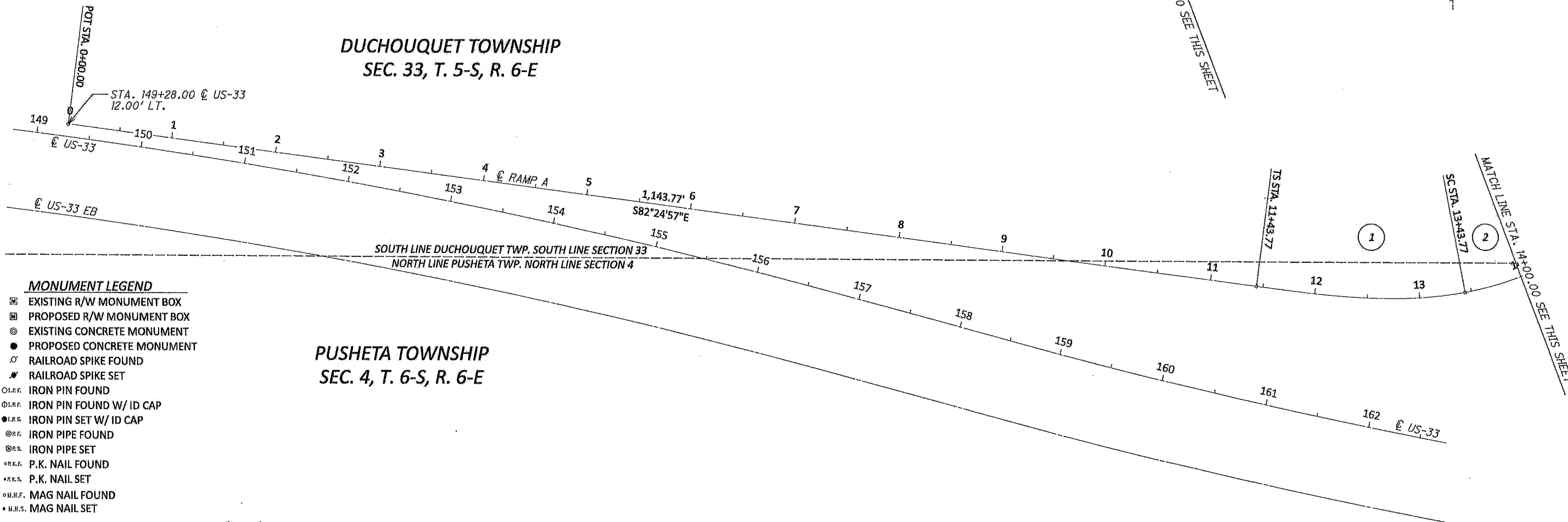
SHEET TOTAL

P.O. 0

1 SPIRAL DATA
P.I. = STA. 12+77.80
Ls = 200.00'
Os = 18°00'00"
LT = 134.03'
ST = 67.30'
X = 198.04'
Y = 20.80'
K = 99.67'
P = 5.22'
C = 199.12'
Start = Sta. 11+43.77
End = Sta. 13+43.77
C.B. = S88°24'39"E

2 CURVE DATA
P.I. = STA. 15+31.57
Δ = 61°04'52" LT
Dc = 18°00'00"
R = 318.31'
T = 187.80'
L = 339.34'
E = 51.27'

3 SPIRAL DATA
P.I. = STA. 17+50.41
Ls = 200.00'
Os = 18°00'00"
LT = 134.03'
ST = 67.30'
X = 198.04'
Y = 20.80'
K = 99.67'
P = 5.22'
C = 199.12'
Start = Sta. 16+83.11
End = Sta. 18+83.11
C.B. = N06°29'53"E

DUCHOUQUET TOWNSHIP
SEC. 33, T. 5-S, R. 6-E

MONUMENT LEGEND

- EXISTING R/W MONUMENT BOX
- PROPOSED R/W MONUMENT BOX
- EXISTING CONCRETE MONUMENT
- PROPOSED CONCRETE MONUMENT
- RAILROAD SPIKE FOUND
- RAILROAD SPIKE SET
- IRON PIN FOUND
- IRON PIN FOUND W/ ID CAP
- IRON PIN SET W/ ID CAP
- IRON PIPE FOUND
- IRON PIPE SET
- P.K. NAIL FOUND
- P.K. NAIL SET
- MAG NAIL FOUND
- MAG NAIL SET

RECEIVED June 16, 20 25

RECORDED June 16, 20 25

BOOK 2 PAGE 63-73

Emily Schlenker
COUNTY RECORDER HS

AUGLAIZE COUNTY ENGINEER

CHECKED BY

FILE NUMBER

6/13/2025

DATE

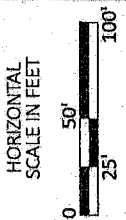
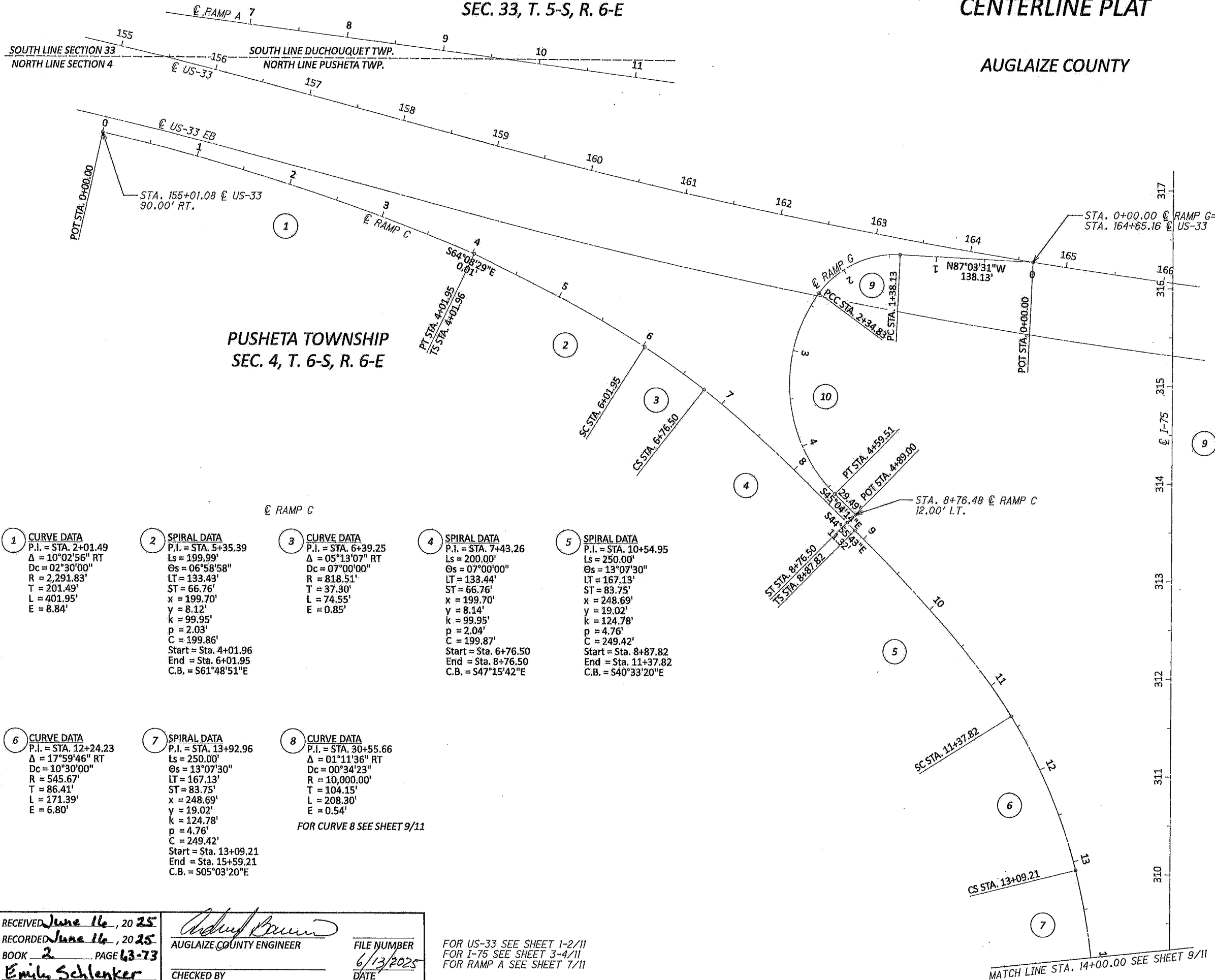
FOR US-33 SEE SHEET 1-2/11

FOR I-75 SEE SHEET 3-4/11

DUCHOUQUET TOWNSHIP
SEC. 33, T. 5-S, R. 6-E

CENTERLINE PLAT

AUGLAIZE COUNTY

CENTERLINE PLAT
AUG-33/75

1 CURVE DATA
P.I. = STA. 2+01.49
 $\Delta = 10^{\circ}02'56''$ RT
 $Dc = 02^{\circ}30'00''$
 $R = 2,291.83'$
 $T = 201.49'$
 $L = 401.95'$
 $E = 8.84'$

2 SPIRAL DATA
P.I. = STA. 5+35.39
 $Ls = 199.99'$
 $\Theta s = 06^{\circ}58'58''$
 $LT = 133.43'$
 $ST = 66.76'$
 $x = 199.70'$
 $y = 8.12'$
 $k = 99.95'$
 $p = 2.03'$
 $C = 199.86'$
Start = Sta. 4+01.96
End = Sta. 6+01.95
C.B. = $S61^{\circ}48'51''$ E

3 CURVE DATA
P.I. = STA. 6+39.25
 $\Delta = 05^{\circ}13'07''$ RT
 $Dc = 07^{\circ}00'00''$
 $R = 818.51'$
 $T = 37.30'$
 $L = 74.55'$
 $E = 0.85'$

4 SPIRAL DATA
P.I. = STA. 7+43.26
 $Ls = 200.00'$
 $\Theta s = 07^{\circ}00'00''$
 $LT = 133.44'$
 $ST = 66.76'$
 $x = 199.70'$
 $y = 8.14'$
 $k = 99.95'$
 $p = 2.04'$
 $C = 199.87'$
Start = Sta. 6+76.50
End = Sta. 8+76.50
C.B. = $S47^{\circ}15'42''$ E

5 SPIRAL DATA
P.I. = STA. 10+54.95
 $Ls = 250.00'$
 $\Theta s = 13^{\circ}07'30''$
 $LT = 167.13'$
 $ST = 83.75'$
 $x = 248.69'$
 $y = 19.02'$
 $k = 124.78'$
 $p = 4.76'$
 $C = 249.42'$
Start = Sta. 8+87.82
End = Sta. 11+37.82
C.B. = $S40^{\circ}33'20''$ E

6 CURVE DATA
P.I. = STA. 12+24.23
 $\Delta = 17^{\circ}59'46''$ RT
 $Dc = 10^{\circ}30'00''$
 $R = 545.67'$
 $T = 86.41'$
 $L = 171.39'$
 $E = 6.80'$

7 SPIRAL DATA
P.I. = STA. 13+92.96
 $Ls = 250.00'$
 $\Theta s = 13^{\circ}07'30''$
 $LT = 167.13'$
 $ST = 83.75'$
 $x = 248.69'$
 $y = 19.02'$
 $k = 124.78'$
 $p = 4.76'$
 $C = 249.42'$
Start = Sta. 13+09.21
End = Sta. 15+59.21
C.B. = $S05^{\circ}03'20''$ E

8 CURVE DATA
P.I. = STA. 30+55.66
 $\Delta = 01^{\circ}11'36''$ RT
 $Dc = 00^{\circ}34'23''$
 $R = 10,000.00'$
 $T = 104.15'$
 $L = 208.30'$
 $E = 0.54'$

FOR CURVE 8 SEE SHEET 9/11

FOR US-33 SEE SHEET 1-2/11
FOR I-75 SEE SHEET 3-4/11
FOR RAMP A SEE SHEET 7/11

MONUMENT LEGEND

- EXISTING R/W MONUMENT BOX
- PROPOSED R/W MONUMENT BOX
- EXISTING CONCRETE MONUMENT
- PROPOSED CONCRETE MONUMENT
- RAILROAD SPIKE FOUND
- RAILROAD SPIKE SET
- IRON PIN FOUND
- IRON PIN FOUND W/ ID CAP
- IRON PIN SET W/ ID CAP
- IRON PIPE FOUND
- IRON PIPE SET
- P.K. NAIL FOUND
- P.K. NAIL SET
- MAG NAIL FOUND
- MAG NAIL SET

RECEIVED June 16, 20 25
RECORDED June 16, 20 25
BOOK 2 PAGE 63-73
Emily Schlenker
COUNTY RECORDER HS

AUGLAIZE COUNTY ENGINEER
CHECKED BY
FILE NUMBER
6/13/2025
DATE

DESIGN AGENCY

DESIGN AGENCY
2270 SOUTH MIAMI STREET
WEST MILTON, OH 43081
P: 917.698.3000 F: 917.698.3928
WWW.BES-ENGINEERING.COM

DESIGNER

SES

REVIEWER

JJB 3-26-24

PROJECT ID

118055

SUBSET TOTAL

8 11

SHEET TOTAL

P.O. 0

MONUMENT LEGEND

- EXISTING R/W MONUMENT BOX
- PROPOSED R/W MONUMENT BOX
- EXISTING CONCRETE MONUMENT
- PROPOSED CONCRETE MONUMENT
- RAILROAD SPIKE FOUND
- RAILROAD SPIKE SET
- IRON PIN FOUND
- IRON PIN FOUND W/ ID CAP
- IRON PIN SET W/ ID CAP
- IRON PIPE FOUND
- IRON PIPE SET
- P.K. NAIL FOUND
- P.K. NAIL SET
- MAG NAIL FOUND
- MAG NAIL SET

RECEIVED June 16, 2025
RECORDED June 16, 2025
BOOK 2 PAGE 63-73
Emily Schlenker
COUNTY RECORDER HS

Steven Schwartz
AUGLAIZE COUNTY ENGINEER

CHECKED BY

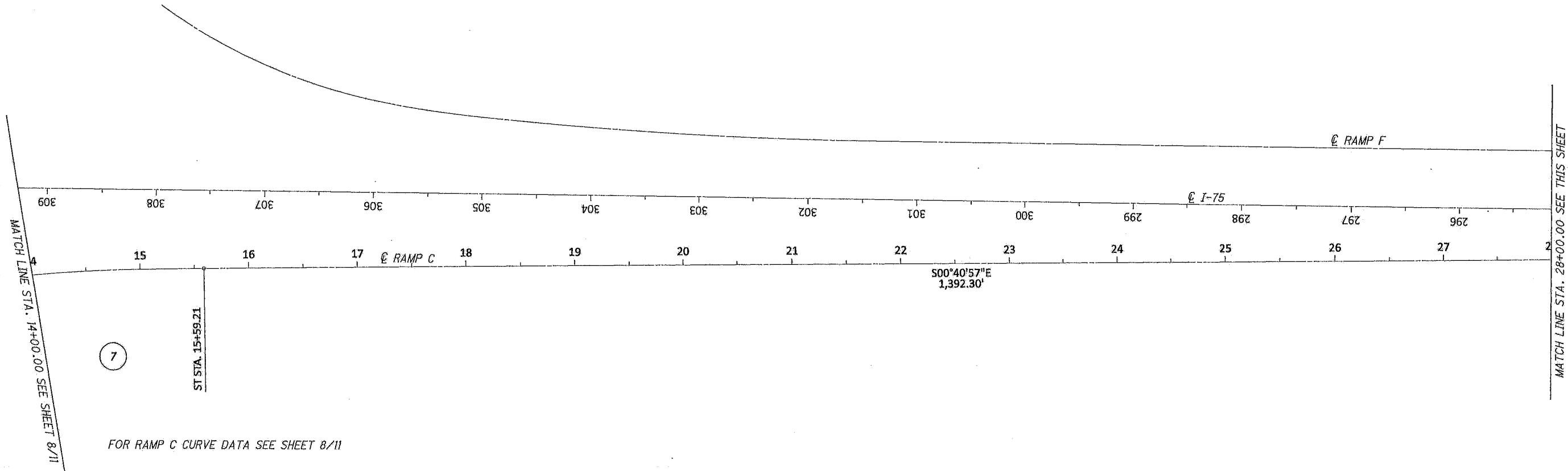
FILE NUMBER
6/13/2025
DATE

FOR I-75 SEE SHEET 3-4/11
FOR RAMP F SEE SHEET 10/11

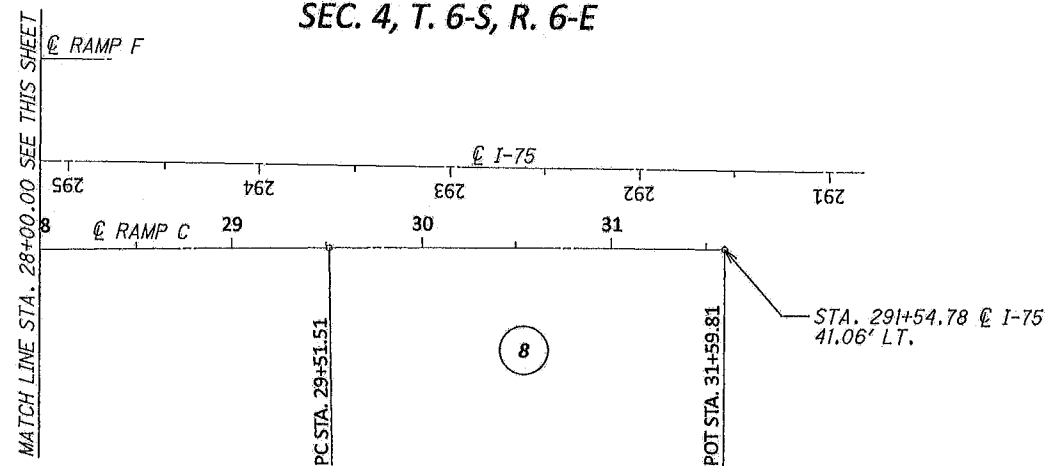
CENTERLINE PLAT

AUGLAIZE COUNTY

PUSHETA TOWNSHIP
SEC. 4, T. 6-S, R. 6-E



PUSHETA TOWNSHIP
SEC. 4, T. 6-S, R. 6-E



HORIZONTAL
SCALE IN FEET
0 25 50 100

CENTERLINE PLAT
AUG-33/75

DESIGN AGENCY

DAK DESIGN
ENGINEERING &
SURVEYING, LLC
2210 SOUTH MIAMI STREET
WEST MILTON, OH 43081
P: 937.698.3000 F: 937.698.3928
WWW.DAKENGINEER.COM

DESIGNER

SES

REVIEWER

JJB 3-26-24

PROJECT ID

118055

SUBSET TOTAL

9 11

SHEET TOTAL

P.O. 0

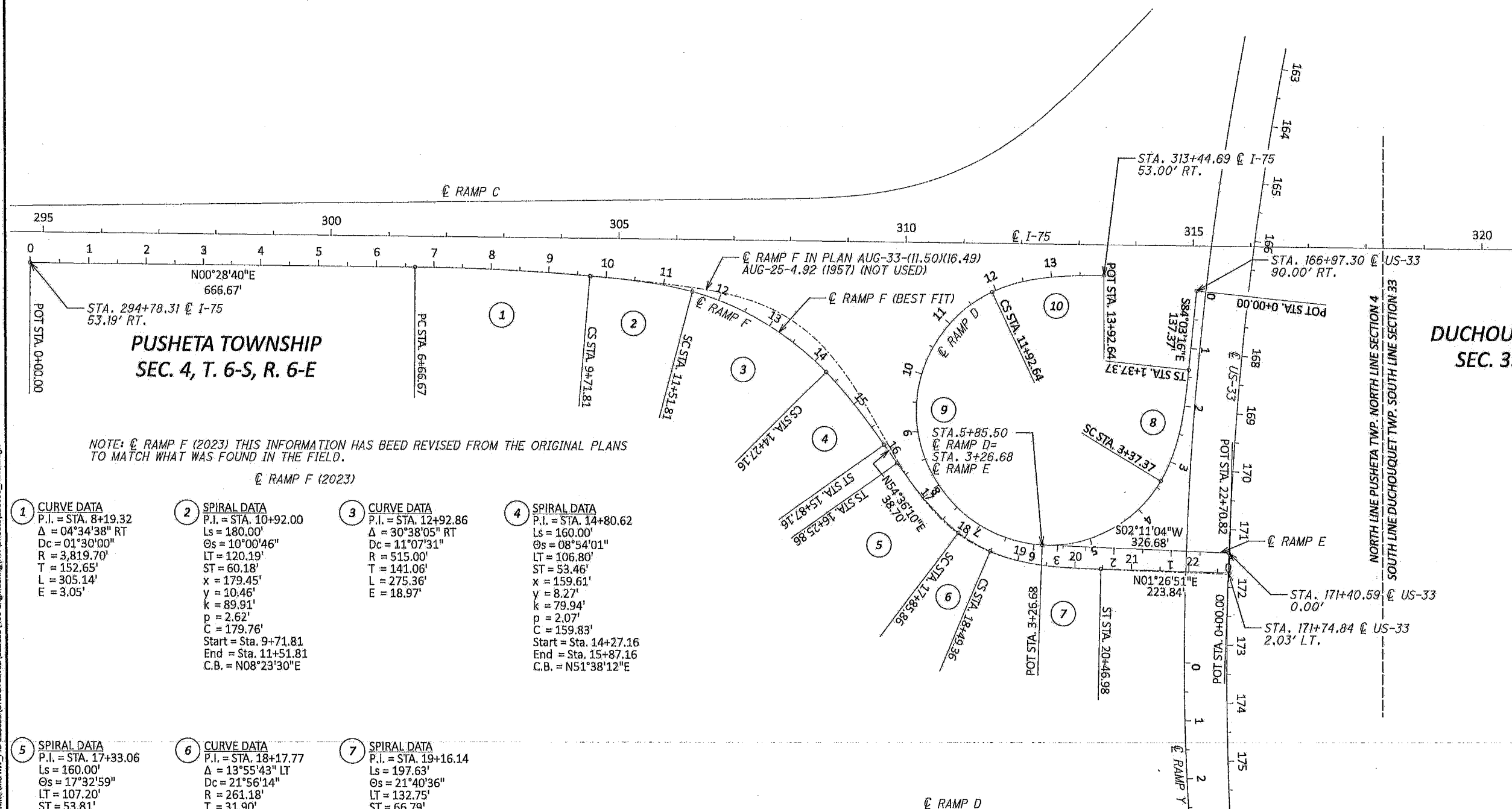
AUGLAIZE COUNTY



HORIZONTAL
SCALE IN FEET

0 100'

CENTERLINE PLAT
AUG-33/75



DUCHOUQUET TOWNSHIP
SEC. 33, T. 5-S, R. 6-E

1 CURVE DATA
P.I. = STA. 8+19.32
 $\Delta = 04^{\circ}34'38''$ RT
Dc = $01^{\circ}30'00''$
R = 3,819.70'
T = 152.65'
L = 305.14'
E = 3.05'

2 **SPIRAL DATA**
P.I. = STA. 10+92.00
Ls = 180.00'
Gs = 10°00'46"
LT = 120.19'
ST = 60.18'
x = 179.45'
y = 10.46'
k = 89.91'
p = 2.62'
C = 179.76'
Start = Sta. 9+71.81
End = Sta. 11+51.81
C.B. = N08°23'30"E

3 CURVE DATA
P.I. = STA. 12+92.86
 $\Delta = 30^{\circ}38'05''$ RT
 $D_c = 11^{\circ}07'31''$
 $R = 515.00'$
 $T = 141.06'$
 $L = 275.36'$
 $E = 18.97'$

4 **SPIRAL DATA**
P.I. = STA. 14+80.62
Ls = 160.00'
 $\Theta_s = 08^{\circ}54'01''$
LT = 106.80'
ST = 53.46'
x = 159.61'
y = 8.27'
k = 79.94'
p = 2.07'
C = 159.83'
Start = Sta. 14+27.16
End = Sta. 15+87.16
C.B. = N51°38'12"E

5 SPIRAL DATA
P.I. = STA. 17+33.06
Ls = 160.00'
Os = 17°32'59"
LT = 107.20'
ST = 53.81'
x = 158.51'
y = 16.23'
k = 79.75'
p = 4.07'
C = 159.33'
Start = Sta. 16+25.86
End = Sta. 17+85.86
C.B. = N48°45'27"E

6 CURVE DATA
P.I. = STA. 18+17.77
 $\Delta = 13^{\circ}55'43''$ LT
 $Dc = 21^{\circ}56'14''$
 $R = 261.18'$
 $T = 31.90'$
 $L = 63.49'$
 $E = 1.94'$







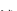


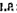


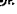


7 SPIRAL DATA
P.I. = STA. 19+16.14
Ls = 197.63'
 $\Delta s = 21^{\circ}40'36''$
LT = 132.75'
ST = 66.79'
x = 194.32'
y = 24.67'
k = 98.34"
p = 6.20'
C = 196.37'
Start = Sta. 18+49.36
End = Sta. 20+46.98
C.B. = N08°39'52"E

8 **SPIRAL DATA**
P.I. = STA. 2+72.06
Ls = 200.00'
 $\Delta s = 25^{\circ}00'01''$
LT = 134.69'
ST = 67.90'
x = 196.23'
y = 28.70'
k = 99.37'
p = 7.22'
C = 198.31'
Start = Sta. 1+37.37
End = Sta. 3+37.37
C.B. = $S75^{\circ}44'05''E$

9 CURVE DATA
 $\Delta = 213^{\circ}49'13''$ RT
 $D_c = 25^{\circ}00'01''$
 $R = 229.18'$
 $T = 0.00'$
 $L = 855.27'$
 $E = 0.00'$

10 SPIRAL DATA
P.I. = STA. 12+60.54
Ls = 200.00'
 $\Delta s = 25^{\circ}00'01''$
LT = 134.69'
ST = 67.90'
x = 196.23'
y = 28.70'
k = 99.37'
p = 7.22'
C = 198.31'
Start = Sta. 11+92.64
End = Sta. 13+92.64
C.B. = N08°33'12"W

MONUMENT LEGEND

-  EXISTING R/W MONUMENT BOX
-  PROPOSED R/W MONUMENT BOX
-  EXISTING CONCRETE MONUMENT
-  PROPOSED CONCRETE MONUMENT
-  RAILROAD SPIKE FOUND
-  RAILROAD SPIKE SET
-  IRON PIN FOUND
-  IRON PIN FOUND W/ ID CAP
-  IRON PIN SET W/ ID CAP
-  IRON PIPE FOUND
-  IRON PIPE SET
-  P.K. NAIL FOUND
-  P.K. NAIL SET
-  MAG NAIL FOUND
-  MAG NAIL SET

RECEIVED June 16, 20 25
RECORDED June 16, 20 25
BOOK 2 PAGE 63-73
Emily Schlenker
COUNTY RECORDER 45

Robert Brown
AUGLAIZE COUNTY ENGINEER

CHECKED BY _____

FILE NUMBER
6/13/2025
DATE

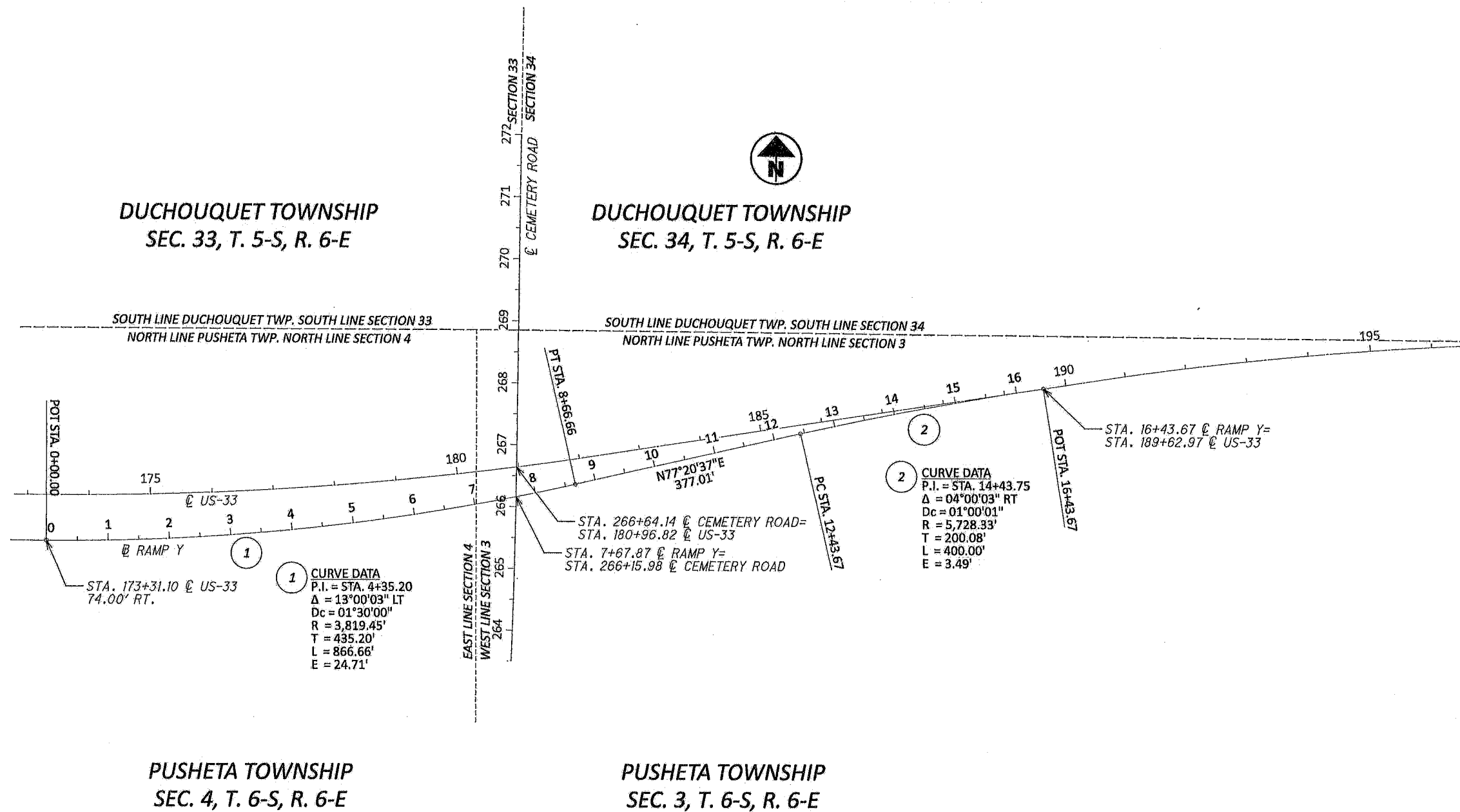
FOR US-33 SEE SHEET 1-2/11
FOR I-75 SEE SHEET 3-4/11
FOR RAMP C SEE SHEET 8-9/11
FOR RAMP Y SEE SHEET 11/11

AUG-33/75 CENTERLINE AND R/W

MODEL-Sheet_Survfit PAPER-SIZE: 34x22 (in.) DATE: 3/26/2024 TIME: 4:09:08 PM USER: steven.schwartz
FILES: 20721714.27 000T ac294.Task 71 AIG-3375 Centeline and RW PID:1180555(OHDOIICE02)1180555(M00-Engineering(RW)Sheet)1180555 RC010.dgn

CENTERLINE PLAT

AUGLAIZE COUNTY



MONUMENT LEGEND

- EXISTING R/W MONUMENT BOX
- PROPOSED R/W MONUMENT BOX
- EXISTING CONCRETE MONUMENT
- PROPOSED CONCRETE MONUMENT
- RAILROAD SPIKE FOUND
- RAILROAD SPIKE SET
- IRON PIN FOUND
- IRON PIN FOUND W/ ID CAP
- IRON PIN SET W/ ID CAP
- IRON PIPE FOUND
- IRON PIPE SET
- P.K. NAIL FOUND
- P.K. NAIL SET
- MAG NAIL FOUND
- MAG NAIL SET

DESIGN AGENCY

DESIGN AGENCY
2210 SOUTH MIAMI STREET
WEST MILTON, OH 45393
P. 937.698.3000 F. 937.698.3928
WWW.DBS-ENGINEER.COM

DESIGNER

SES

REVIEWER

JJB 3-26-24

PROJECT ID

118055

SUBSET TOTAL

11 11

SHEET TOTAL

P.O. 0

RECEIVED June 16, 2025
RECORDED June 16, 2025
BOOK 2 PAGE 63-73
Emily Schlenker
COUNTY RECORDER Hs

AUGLAIZE COUNTY ENGINEER
CHECKED BY
DATE

FILE NUMBER
6/13/2025
DATE

FOR US-33 SEE SHEET 1-2/11
FOR CEMETERY RD. SEE SHEET 5/11

CENTERLINE PLAT
AUG-33/75

HORIZONTAL
SCALE IN FEET
0 50' 100' 200'